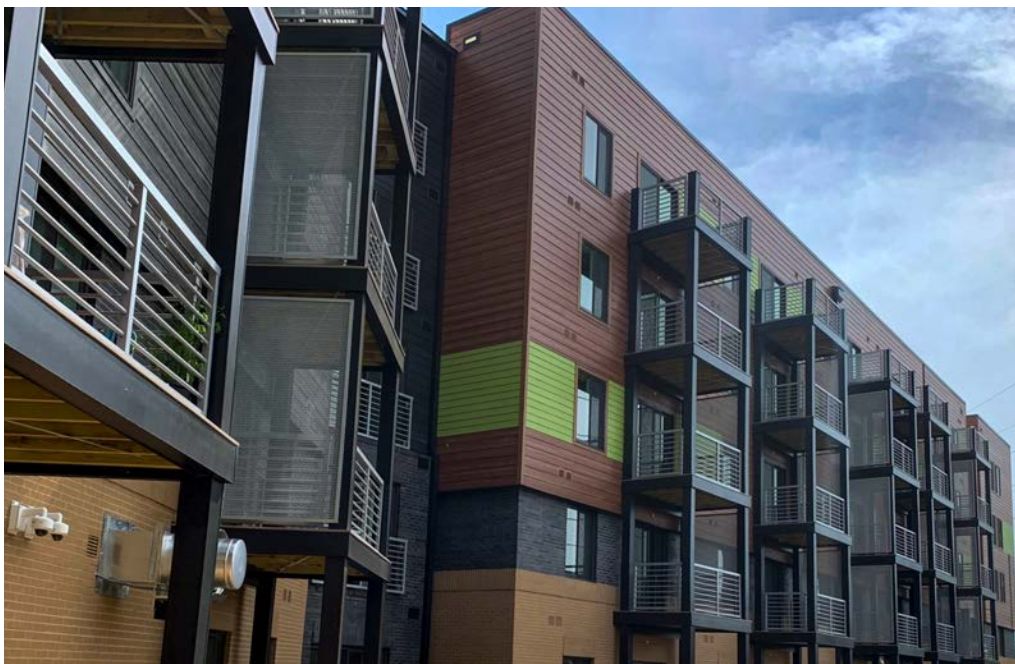
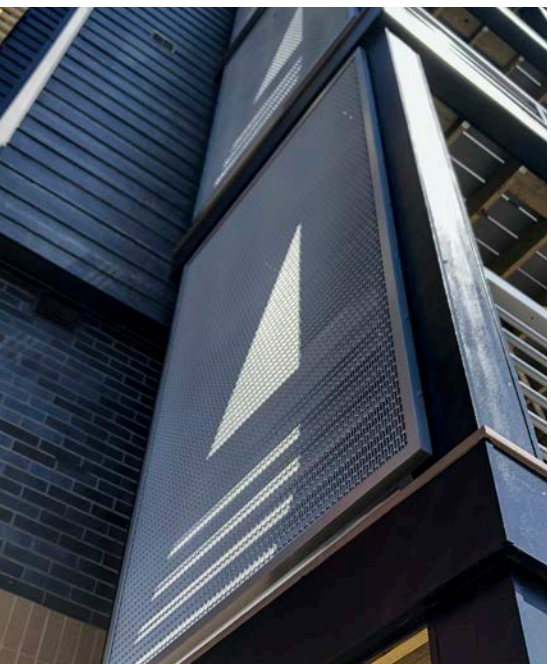
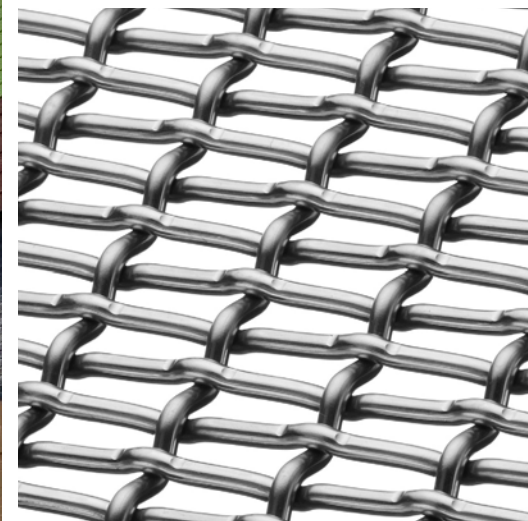


## THE APEX

Balcony Privacy Screens  
Arlington, Virginia, USA

### LPZ-54



The Apex is a 260,000 square-foot affordable housing project located along The Four Mile Run Stream in Arlington, Virginia—a neighborhood defined by burgeoning redevelopment and a nearby nature habitat. The design scheme, spearheaded by local firm MTFA Architecture, utilized double-duty materials that require minimal maintenance, while providing urban design vibrancy, longevity, and an industrial aesthetic.

Banker Wire's LPZ-54—a heavy lock-crimp wire mesh with a rectangular pattern—was specified alongside such materials as weathered concrete boards, monochromatic masonry, stained concrete siding, metal trim, and vibrant green accents, acting as the 'metal jewel' that ties the design story together.

Referred to as 'sails,' the privacy screen concept relied heavily on LPZ-54—a wire mesh weave with varying appearances depending on one's viewpoint. Banker Wire then fabricated the wire mesh into 'Angle Iron' frames with a mounting strategy that complied with the overall construction of the balconies.

**BANKER** 