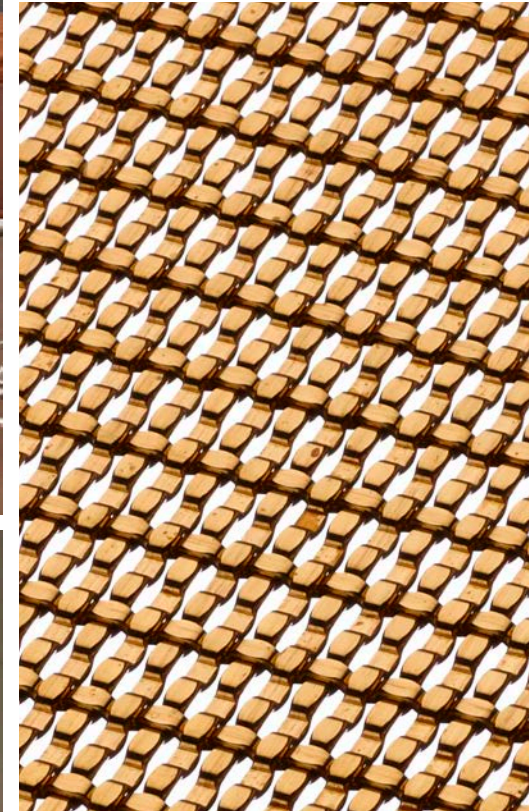


JANE HOPE RESIDENCE

Custom Fireplace
Toronto, Ontario, Canada

SZ-3

*Shown below in bronze,
standard mill finish*



Exemplifying the versatility of Banker Wire's architectural mesh in residential applications, designer and homeowner Jane Hope, incorporated an antique brass plated SZ-3 wire mesh within the design of her custom fireplace. Thoughtfully selected for its unique semi-transparent characteristics, the metal mesh compliments the honest, raw material design, creating a feature that is instantly recognized for its sleek form and striking aesthetic.

BANKER 