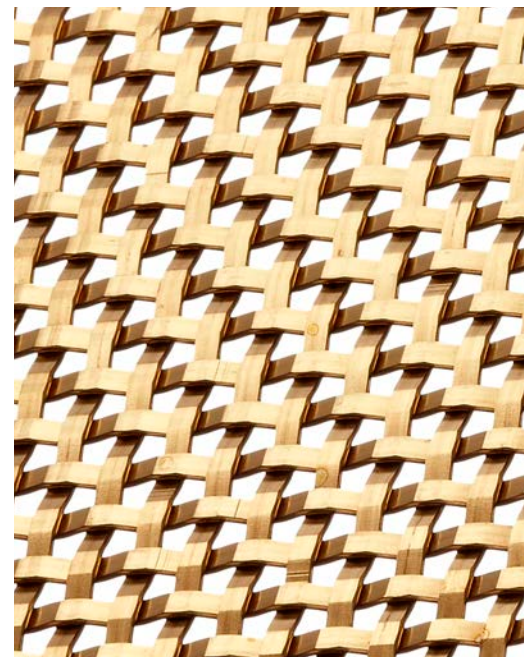


## SANDSTONE RESIDENCE

Cabinetry  
Green Lake, Wisconsin USA

### S-16



The rich walnut cabinetry of this Green Lake, Wisconsin home is complemented by Banker Wire's S-16 Bronze woven wire mesh. The bronze wire mesh has been finished to a US10B (dark bronze) to match the cabinet hardware. This customer used the wire mesh to insert directly on top of the cabinetry's existing wood panels. The result is a focus on the woven wire mesh texture rather than what is inside the cabinet.

The S-16 architectural wire mesh pattern has been designed specifically for lower tensile materials like copper, bronze, and brass. The faceted shape of the wire will reflect light at different angles throughout the day. The standard finish for the S-16 pattern is "Bare" unacquered bronze, brass or copper however there are a number of secondary finishes available that will enhance this woven wire characteristic without masking it.



**BANKER WIRE**

600 PERKINS DRIVE | MUKWONAGO WI 53149 USA