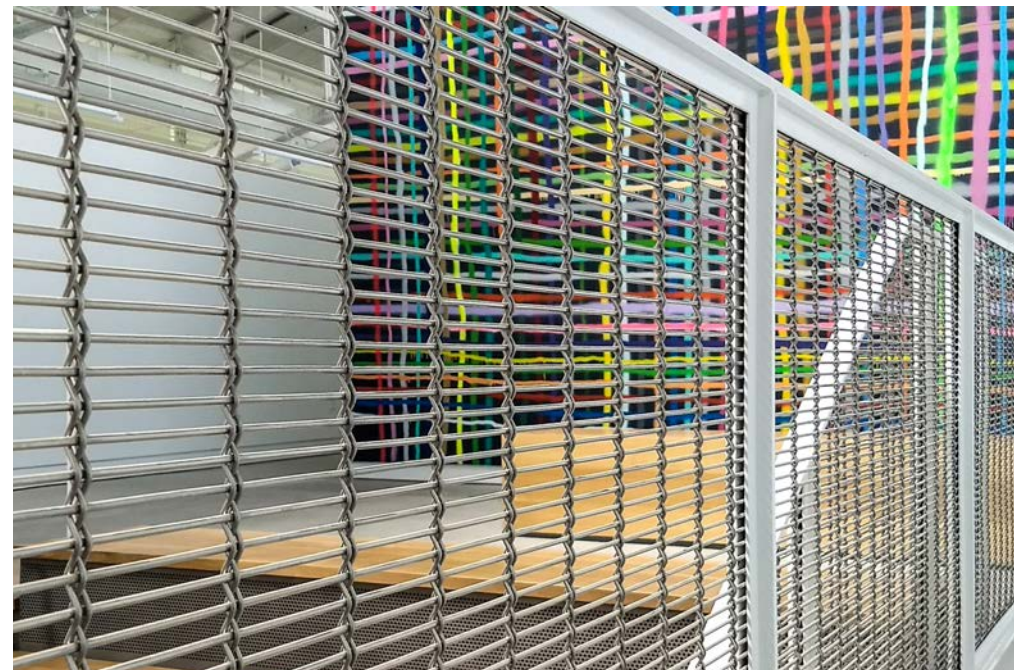
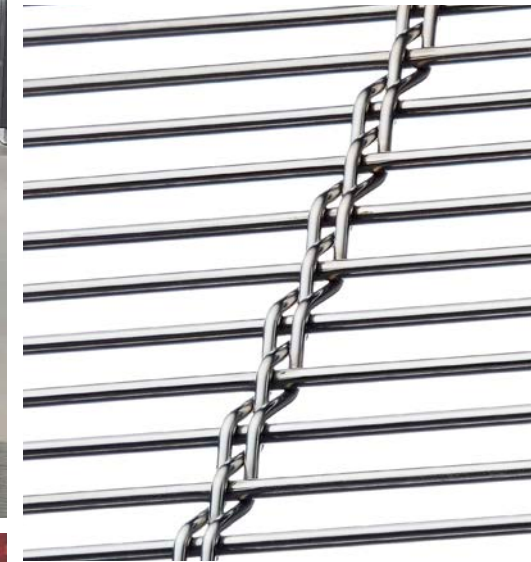


SAN FRANCISCO ART INSTITUTE, FORT MASON

Interior Railing
San Francisco, California USA

M13Z-145



The San Francisco Art Institute is a non-profit art college founded in 1871 and has held the reputation of being one of the nation's oldest and most prestigious schools of higher education in contemporary art. Recently, SFAI moved its graduate campus of 15 years from Dogpatch on Thrid Street, to Pier 2 in Fort Mason. The grand opening of the new graduate campus is scheduled for mid-November, 2017. The new graduate campus hosts 160+ artist studios, over 4000 square feet of gallery and performance space, digital media suites, student lounge, and a seminar room.

SFAI's Fort Mason building consists of two floors, with the upper floor being exposed to the lower level. The stairs and the railing around the upper level feature Banker Wire's M13Z-145 wire mesh pattern in stainless steel as infill panels. The simplicity and openness of M13Z-145 allows for limited distractions in an environment intended to cultivate an artist's personal creativity. This decorative mesh is also incredibly strong and able to withstand the rigors of high traffic areas.

BANKER WIRE

600 PERKINS DRIVE | MUKWONAGO WI 53149 USA