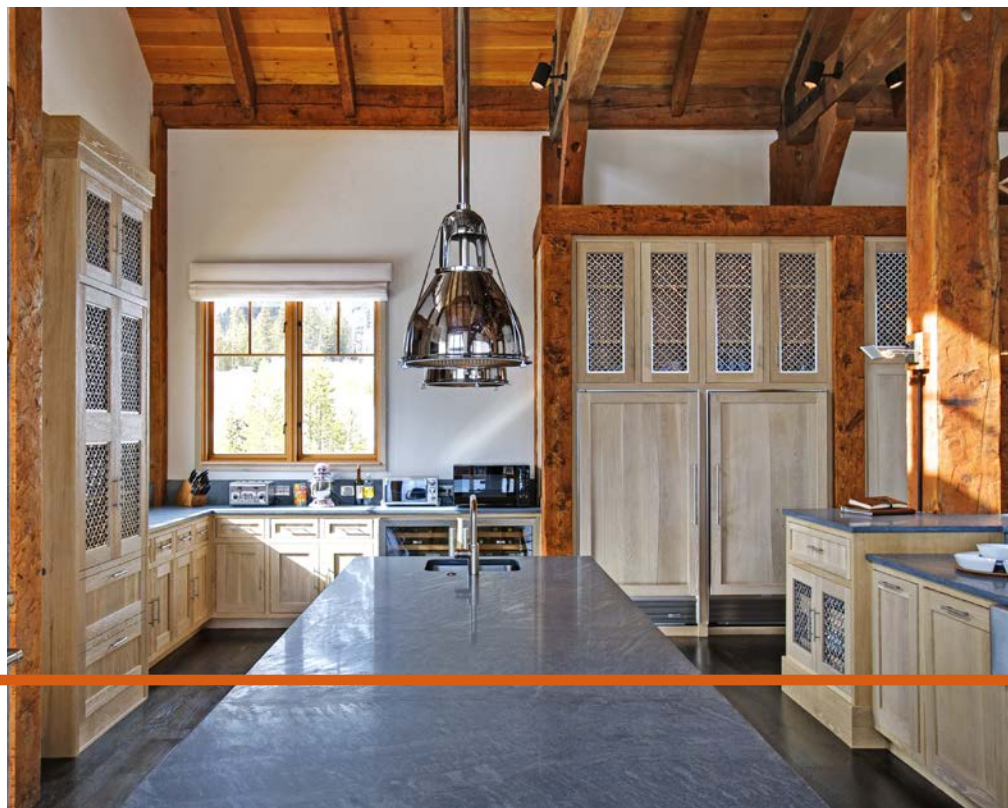
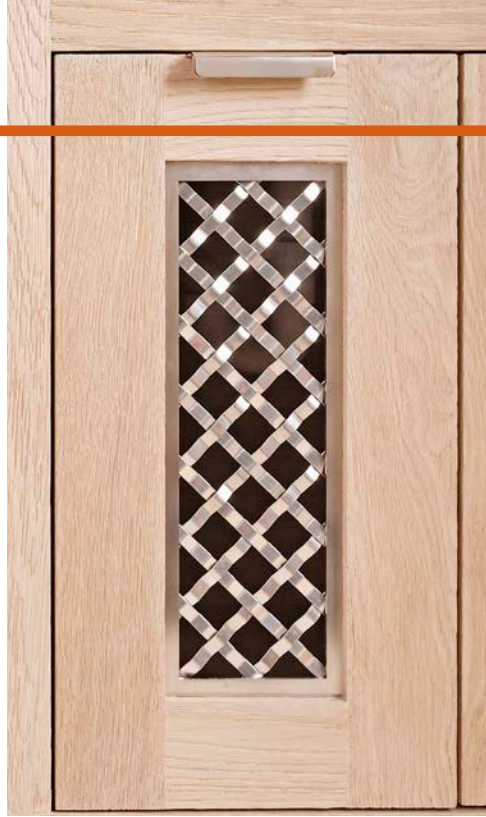


## BIG SKY RESIDENCE

Cabinetry  
Big Sky, Montana USA

S-15



*"Banker wire was used in this premier ski home to enhance the striking modern interiors in their play against a more traditional timber and stone environment. The owner's lifestyle and tastes readily harmonize with the strength, craftsmanship, and sparkle of the wire fabric panels. Whether during the day when it evokes the pristine and crystalline snow and ice, or at night when the warm glow of the soft ambient lighting dances on the texture of the weave, the sophisticated refinement of the home is pronounced with the Banker Wire panels."*

-Carl Erickson Associates

Banker Wire had the great pleasure of fabricating custom wire mesh panels for this beautiful Montana home. The S-15 stainless steel woven wire mesh was cut on a 45 degree angle to achieve a diamond orientation. The diamond mesh was then framed with 1/8" stainless steel flat bar to allow the frame to reveal itself once the cabinet maker installed the mesh panel into the door openings.

**BANKER WIRE**

600 PERKINS DRIVE | MUKWONAGO WI 53149 USA